

CONE CRUSHERS



上海秦路实业有限公司

SHANGHAI KINGLINK INDUSTRY CO., LTD.



Aggregate



Recycle



Construction



Mining

 KINGLINK | 上海秦路实业有限公司

Add: Lane123, Shenmei Road, Pudong District, Shanghai, China 201318

Tel: +86-21-2095 8317

Fax: +86-21-2095 9271

Email: info@kinglink-china.com



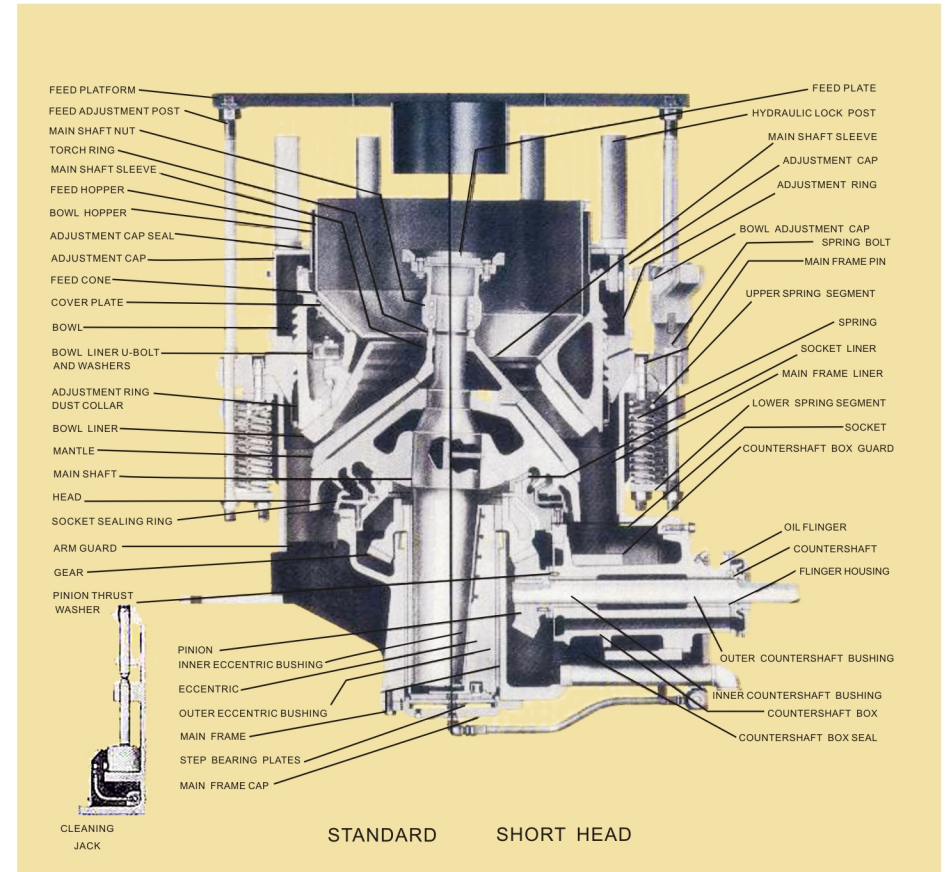
TYPICAL AGGREGATE PRODUCT GRADATIONS

Product Size Inch(mm)	Closed Side Setting of Crusher, Inch (mm)							
	1/4" (6 mm)	3/8" (10 mm)	1/2" (13 mm)	3/4" (19 mm)	1" (25 mm)	1-1/4" (32 mm)	1-1/2" (38 mm)	2" (51 mm)
4"(102 mm)								100
3"(76 mm)							100	91
2-1/2"(64 mm)						100	100	82
2"(51 mm)					100	93	94	70
1-1/2"(38 mm)				100	92	80	76	51
1-1/4"(32 mm)				95	82	70	60	41
1"(25 mm)			100	86	70	54	44	32
3/4"(19 mm)		100	92	70	51	39	32	25
1/2"(13 mm)	100	86	70	44	32	26	22	17
3/8"(10 mm)	94	70	51	32	25	20	17	13
1/4"(6 mm)	70	44	32	22	17	14	12	9
3/16"(5 mm)	50	32	25	17	13	11	9	7
No.6 (3 mm)	34	23	18	12	10	8	7	5
No.8 (2 mm)	25	17	13	9	7	6	5	4

FEED MATERIAL RATING-AVERAGE/HARD

Open circuit product analysis*(% passing)

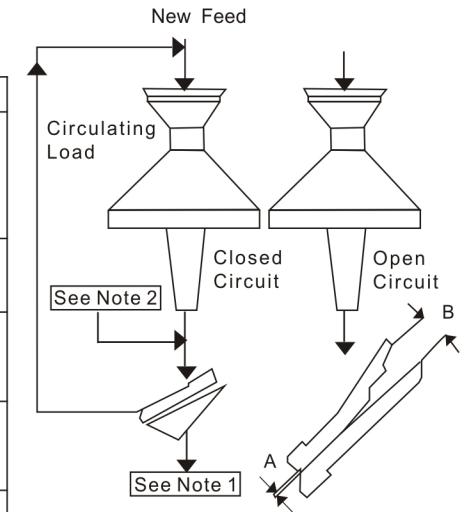
for given closed side setting of crusher



SYMONS Cone Crusher

STANDARD SYMONS CONE CRUSHERS-CAVITIES • FEED OPENINGS • PRODUCT SIZES • CAPACITIES

OPEN CIRCUIT- CAPACITIES IN TONS PER HOUR PASSING THROUGH THE CRUSHER AT INDICATED DISCHARGE SETTING "A"														
Size	Type of cavity	Recommended minimum discharge setting A	Feed opening with min. recommended discharge setting A		3/8" (9mm)	1/2" (13mm)	5/8" (16mm)	3/4" (19mm)	7/8" (22mm)	1" (25mm)	1-1/4" (31mm)	1-1/2" (38mm)	2" (51mm)	2-1/2" (64mm)
			B Closed side	B Open side										
3 Ft. (914mm)	Fine	3/8"(9mm)	83mm	102mm	50	65	80	90	100	130	150	180		
	Coarse	1/2"(13mm)	159mm	175mm		65	80	100	120	130	150	180		
	Extra Coarse	1"(25mm)	163mm	178mm						130	150	180		
4-1/4 Ft. (1295mm)	Fine	1/2"(13mm)	109mm	137mm		120	140	160	170	180	200			
	Medium	5/8"(16mm)	188mm	210mm			145	175	190	220	250	280		
	Coarse	3/4"(19mm)	216mm	241mm				190	215	240	275	325	385	
5-1/2 Ft. (1676mm)	Coarse	1"(25mm)	238mm	259mm						260	300	335	395	
	Extra Coarse	1"(25mm)	238mm	259mm						260	300	335	395	
	Fine	5/8"(16mm)	188mm	209mm			200	225	250	285	325	360		
7 Ft. (2100mm)	Medium	7/8"(22mm)	213mm	241mm					285	320	370	420	460	
	Coarse	1"(25mm)	241mm	269mm				420	450	550	680	800	1100	700
	Extra Coarse	1-1/4"(31mm)	334mm	369mm						670	800	890	1100	1400
7 Ft. (2100mm)	Extra Coarse	1-1/2"(38mm)	425mm	460mm							870	970	1300	1500



Note 1 Net finished product (screen undersize)
 Note 2 Tons per hour passing through crusher (net finished product plus recirculating load)

CLOSED CIRCUIT- CAPACITIES IN TONS PER HOUR BASED ON CLOSED CIRCUIT OPERATION

Size	Type of cavity	Recommended minimum discharge setting A	Feed opening with min. recommended discharge setting A		Effective square opening on closed circuit screen																			
					3/8"(10mm)	1/2"(13mm)	5/8"(16mm)	3/4"(19mm)	7/8"(22mm)	1"(25mm)	1-1/4"(31mm)	1-1/2"(38mm)	2"(50mm)	2-1/2"(63mm)										
					Recommended closed side settings for closed circuit operation																			
					B Closed side		B Open side		3/8"(10mm)		3/8"(10mm)		1/2"(13mm)		5/8"(16mm)		3/4"(19mm)		3/4"(19mm)		7/8"(22mm)		1"(25mm)	
				Note 1	Note 2	Note 1	Note 2	Note 1	Note 2	Note 1	Note 2	Note 1	Note 2	Note 1	Note 2	Note 1	Note 2	Note 1	Note 2	Note 1	Note 2	Note 1	Note 2	
3 Ft. (914mm)	Fine	3/8"(9mm)	83mm	102mm	35	65	40	70	45	75	60	90	70	105	80	105	95	120	120	150	145	170		
	Coarse	1/2"(13mm)	159mm	175mm					45	75	60	90	75	110	85	110	100	125	120	150	145	170		
	Extra Coarse	1"(25mm)	163mm	178mm									75	110										
4-1/4 Ft. (1295mm)	Fine	1/2"(13mm)	109mm	137mm					95	135	105	155	125	185	145	190	175	220	205	205	235	280		
	Medium	5/8"(16mm)	188mm	210mm							120	175	135	200	155	205	190	235	215	260	250	295		
	Coarse	3/4"(19mm)	216mm	241mm									140	210	165	215	190	245	225	275	260	310		
5-1/2 Ft. (1676mm)	Extra Coarse	1"(25mm)	238mm	259mm																				
	Fine	5/8"(16mm)	188mm	209mm							160	235	180	265	210	270	240	300	300	360	330	390	400	465
	Medium	7/8"(22mm)	213mm	241mm													250	310	310	375	250	400	420	490
7 Ft. (2100mm)	Coarse	1"(25mm)	241mm	269mm																				
	Extra Coarse	1-1/4"(31mm)	334mm	369mm																				
	Extra Coarse	1-1/2"(38mm)	425mm	460mm																				

Consult factory for capacities

Design & Specifications Subject to Change Without Notice

Email: info@kinglink-china.com

www.kinglink-china.com

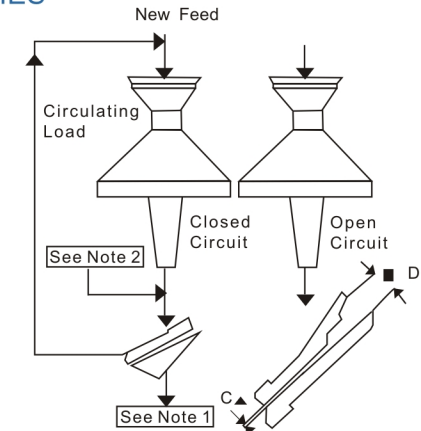
Tel: +86-21-2095 8317

Fax: +86-21-2095 9271

Mobile: +86-15601968455

SHORT HEAD SYMONS CONE CRUSHERS-CAVITIES • FEED OPENINGS • PRODUCT SIZES • CAPACITIES

OPEN CIRCUIT- CAPACITIES IN TONS PER HOUR PASSING THROUGH THE CRUSHER AT INDICATED DISCHARGE SETTING "C"												
Size	Type of cavity	Recommended minimum discharge setting C	Feed opening with min. recommended discharge setting C		1/8" (3mm)	3/16" (5mm)	1/4" (6mm)	3/8" (10mm)	1/2" (13mm)	5/8" (16mm)	3/4" (19mm)	1" (25mm)
			D Closed side	D Open side								
3 Ft. (914mm)	Fine	1/8"(3mm)	13mm	41mm	30	45	60	75	100	110		
	Medium	1/8"(3mm)	33mm	60mm	30	45	60	75	100	110		
	Coarse	1/4"(6mm)	51mm	76mm			65	80	105	125	140	
4-1/4 Ft. (1295mm)	Fine	1/8"(3mm)	29mm	64mm	40	65	90	115	150	180		
	Medium	1/4"(6mm)	54mm	89mm			90	115	150	180		
	Coarse	5/16"(8mm)	70mm	105mm			120	175	200		220	250
	Extra Coarse	5/8"(16mm)	98mm	133mm							230	260
5-1/2 Ft. (1676mm)	Fine	3/16"(5mm)	35mm	70mm		100	150	180	230	280	310	
	Medium	1/4"(6mm)	54mm	89mm			150	180	230	280	310	
	Coarse	3/8"(10mm)	98mm	133mm			210	280	310	340	370	
	Extra Coarse	1/2"(13mm)	117mm	133mm				280	310	340	370	
7 Ft. (2100mm)	Fine	3/16"(5mm)	51mm	105mm		210	300	360	400	450	560	
	Medium	3/8"(10mm)	95mm	133mm			390	450	500	560	660	
	Coarse	1/2"(13mm)	127mm	178mm				500	530	600	660	
	Extra Coarse	5/8"(16mm)	152mm	203mm				560	650	720		



Note 1 Net finished product(screen undersize)
 Note 2 Tons per hour passing through crusher (net finished product plus recirculating load)

CLOSED CIRCUIT- CAPACITIES IN TONS PER HOUR BASED ON CLOSED CIRCUIT OPERATION

Size	Type of cavity	Recommended minimum discharge setting C	Feed opening with min. recommended discharge setting C		Effective square opening on closed circuit screen															
					1/8"(3mm)	3/16"(5mm)	1/4"(6mm)	3/8"(10mm)	1/2"(13mm)	5/8"(16mm)	3/4"(19mm)	1"(25mm)								
					Recommended closed side settings for closed circuit operation															
					1/8"(3mm)		3/16"(5mm)		3/16"(5mm)		1/4"(6mm)		3/8"(10mm)		1/2"(13mm)		5/8"(16mm)		3/4"(19mm)	
Note 1		Note 2		Note 1		Note 2		Note 1		Note 2		Note 1		Note 2		Note 1		Note 2		
3 Ft. (914mm)	Fine	1/8"(3mm)	13mm	41mm	15	30	20	40	30	45	50	65	70	85	80	110				
	Medium	1/8"(3mm)	33mm	60mm	15	30	20	40	30	45	50	65	70	85	80	100	95	135		
	Coarse	1/4"(6mm)	51mm	76mm							55	70	75	90	85	115	105	145	130	150
4-1/4 Ft. (1295mm)	Fine	1/8"(3mm)	29mm	64mm	20	40	35	70	55	80	75	110	100	130	125	170				
	Medium	1/4"(6mm)	54mm	89mm							80	120	105	140	125	170				
	Coarse	5/16"(8mm)	70mm	105mm									110	150	140	200	175	250	200	260
	Extra Coarse	5/8"(16mm)	98mm	133mm											140	200	175	250	200	260
5-1/2 Ft. (1676mm)	Fine	3/16"(5mm)	35mm	70mm			65	130	90	140	135	200	175	220	210	270				
	Medium	1/4"(6mm)	54mm	89mm							135	200	175	220	210	270	245	350	280	340
	Coarse	3/8"(10mm)	98mm	133mm									180	240	220	280	250	360	320	385
	Extra Coarse	1/2"(13mm)	117mm	133mm											220	280	250	360	320	395
7 Ft. (2100mm)	Fine	3/16"(5mm)	51mm	105mm			120	240	160	230	240	360	315	390	360	450	420	500	500	600
	Medium	3/8"(10mm)	95mm	133mm									315	420	360	500	420	550	500	600
	Coarse	1/2"(13mm)	127mm	178mm											380	540	450	650	550	660
	Extra Coarse	5/8"(16mm)	152mm	203mm													465	680	550	690

Design & Specifications Subject to Change Without Notice